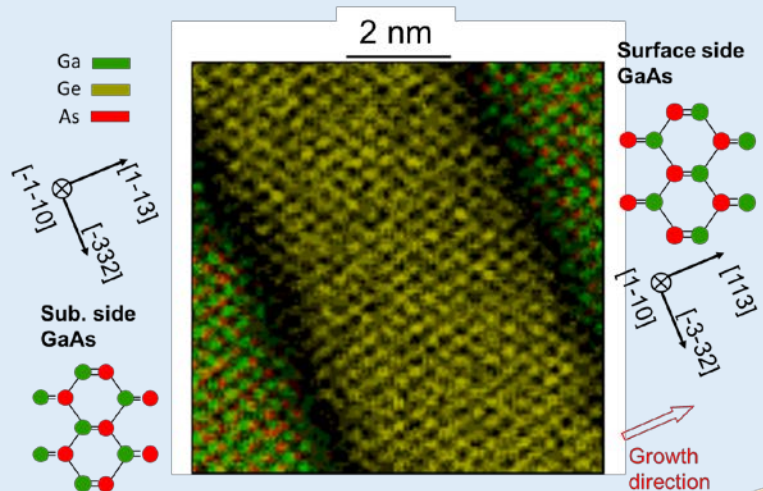
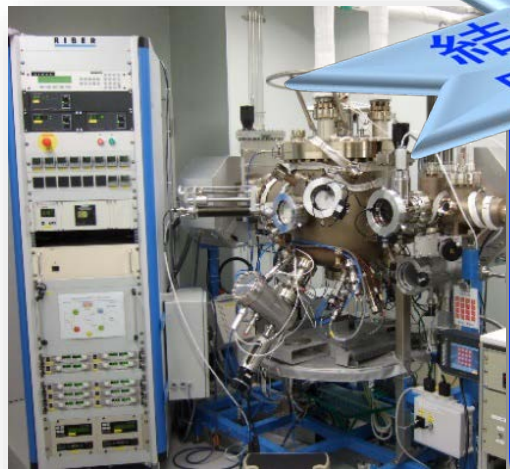
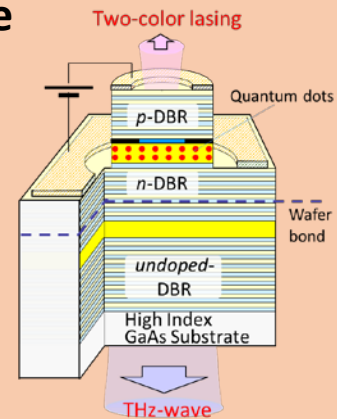
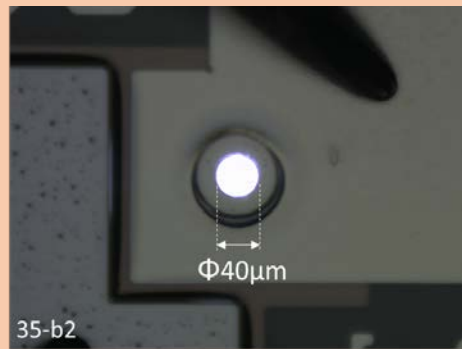


# 半導体ナノ構造の結晶成長および非線形デバイスへの応用

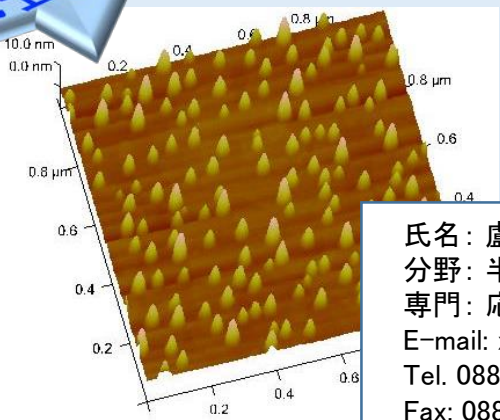
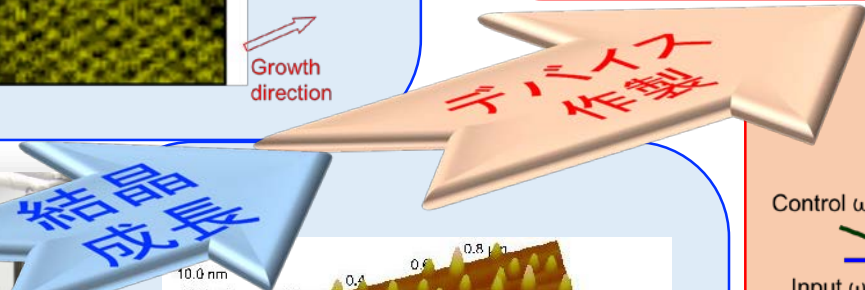
## Sublattice reversal



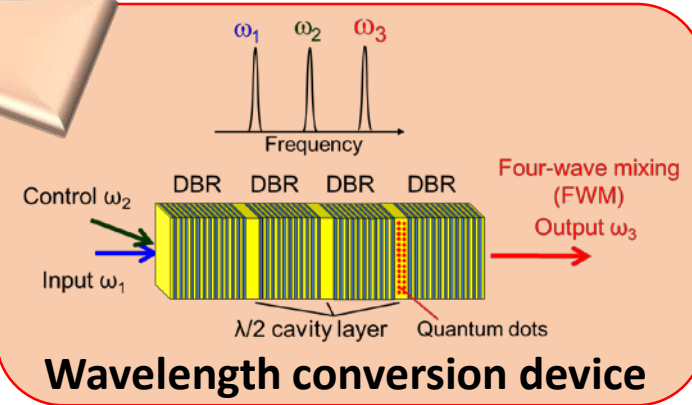
## Surface-emitting THz device



Molecular beam epitaxy



Quantum dots



Wavelength conversion device

氏名: 盧翔孟  
 分野: 半導体量子工学  
 専門: 応用物理  
 E-mail: xm-lu@tokushima-u.ac.jp  
 Tel. 088-656-7672  
 Fax: 088-656-7674  
 HP : <http://www.frc.tokushima-u.ac.jp/frc-nano/>

